



Bunbury Mill



Welcome to the Bunbury Mill Newsletter Autumn 2015 Part 2

Part 1 of this newsletter described some events of the 2015 season. Now that the 'closed season' is here, the mill volunteers turn their attention to the maintenance work needed to keep Bunbury Mill running as a heritage for future generations.

We NEED help - there are loads of opportunities for involvement - learning how to work a Victorian water mill, helping to maintain the historic machinery, work on the buildings and the attractive grounds, IT contributions to our publicity, helping to show visitors round the mill, and many others. Some are illustrated below.

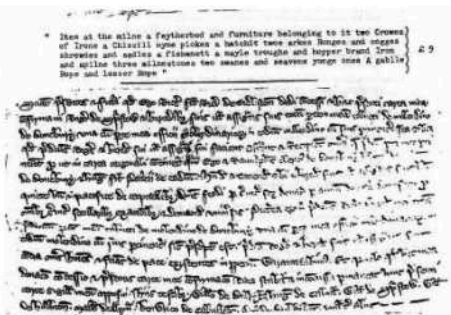
If you might be interested, do contact us (no commitment!) info@bunburymill.com



Repairing the perimeter fence to keep cattle out of the mill grounds



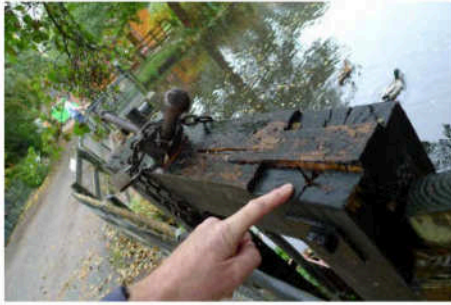
Repairing this 'toy' model; designing and making a new technically detailed model of the mill machinery



Research into the history of Bunbury Mill



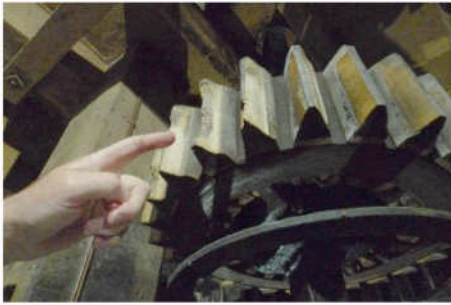
Re-roping the sack hoist control system



Repairing the top timber of the main mill sluice gate



Clearing weeds to smarten up the pond area



Replacing worn and broken wooden teeth in the mill's gearing



Helping to develop the mill's web site and mailing system

If you think you might enjoy helping us to maintain and operate this priceless piece of our village heritage, contact info@bunburymill.com or phone Peter on 01829 260641 - DO IT NOW!!!

Copyright © 2015 Bunbury Mill.

[visit the Bunbury Mill Website](#)

[forward to a friend](#)

This email was sent to peter.robinson@bunburymill.com
[why did I get this?](#) [unsubscribe from this list](#) [update subscription preferences](#)
Bunbury Mill · Bowe's Gate Rd · Bunbury, CW6 9PP · United Kingdom

